

1. Table of Contents (This Page)
Created on Mon Jan 17 13:11:21 2011

2. component

3. solder

4. plated-drill

5. componentmask

6. soldermask

7. topsilk

8. bottomsilk

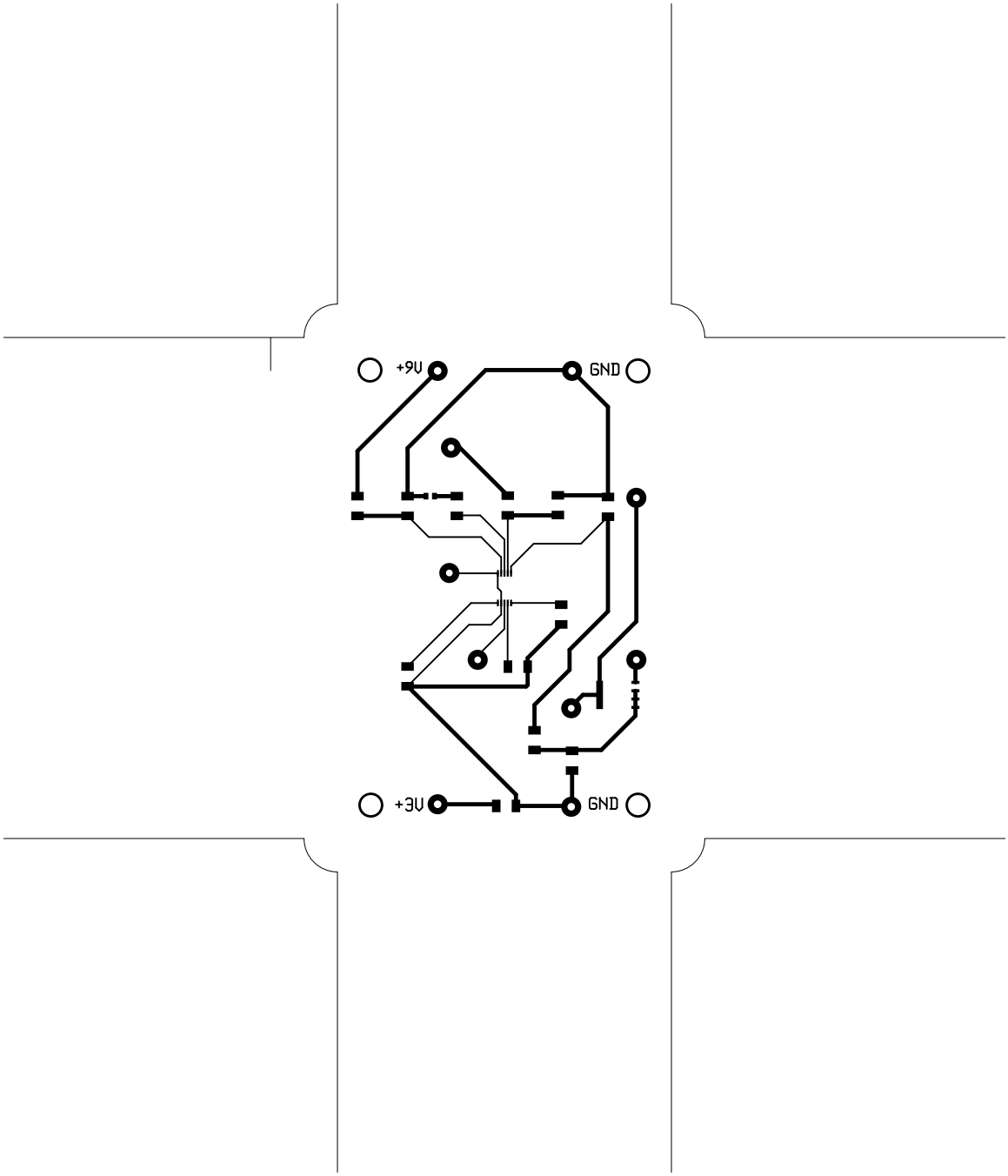
9. bottompaste

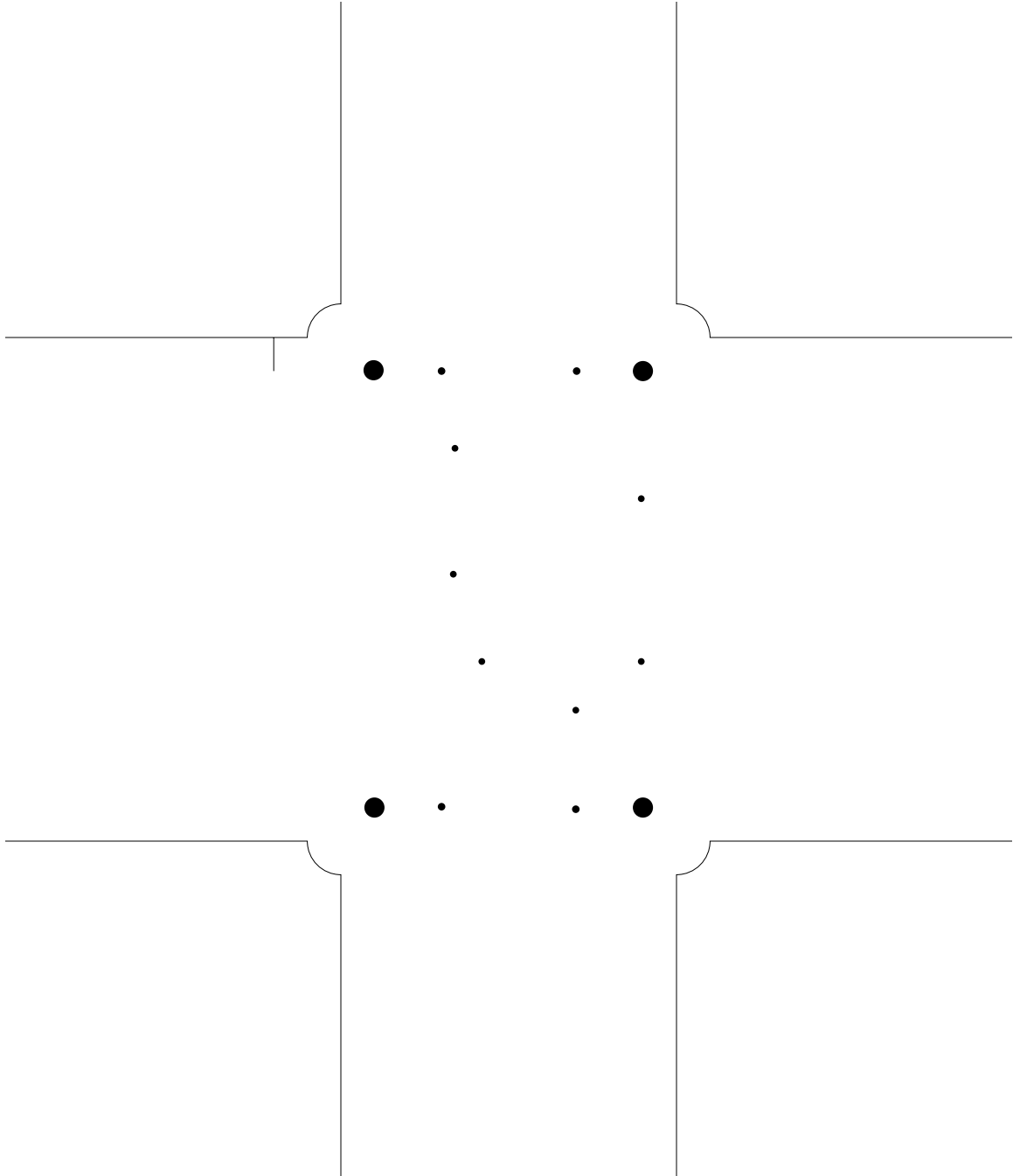
10. toppaste

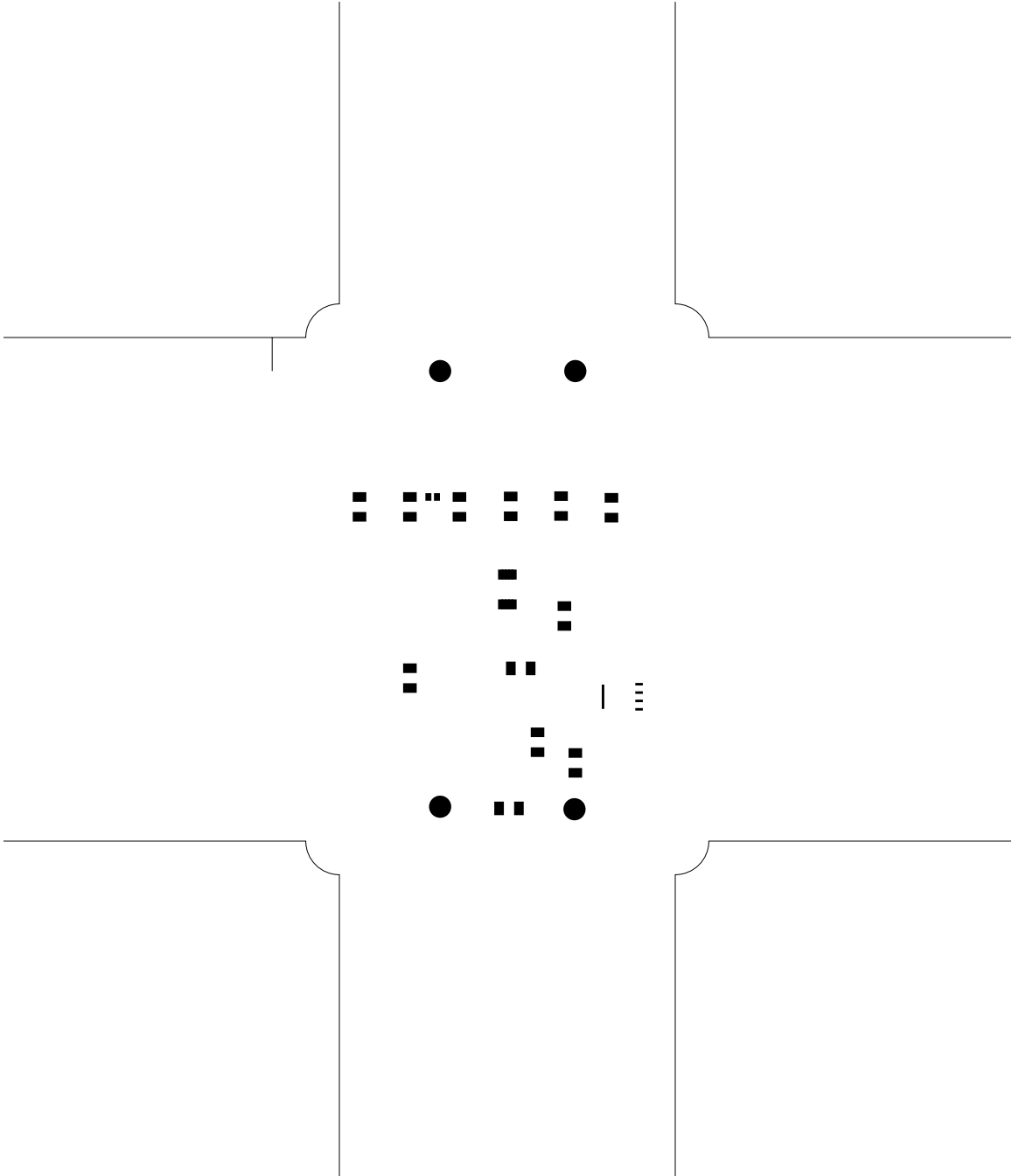
11. topassembly

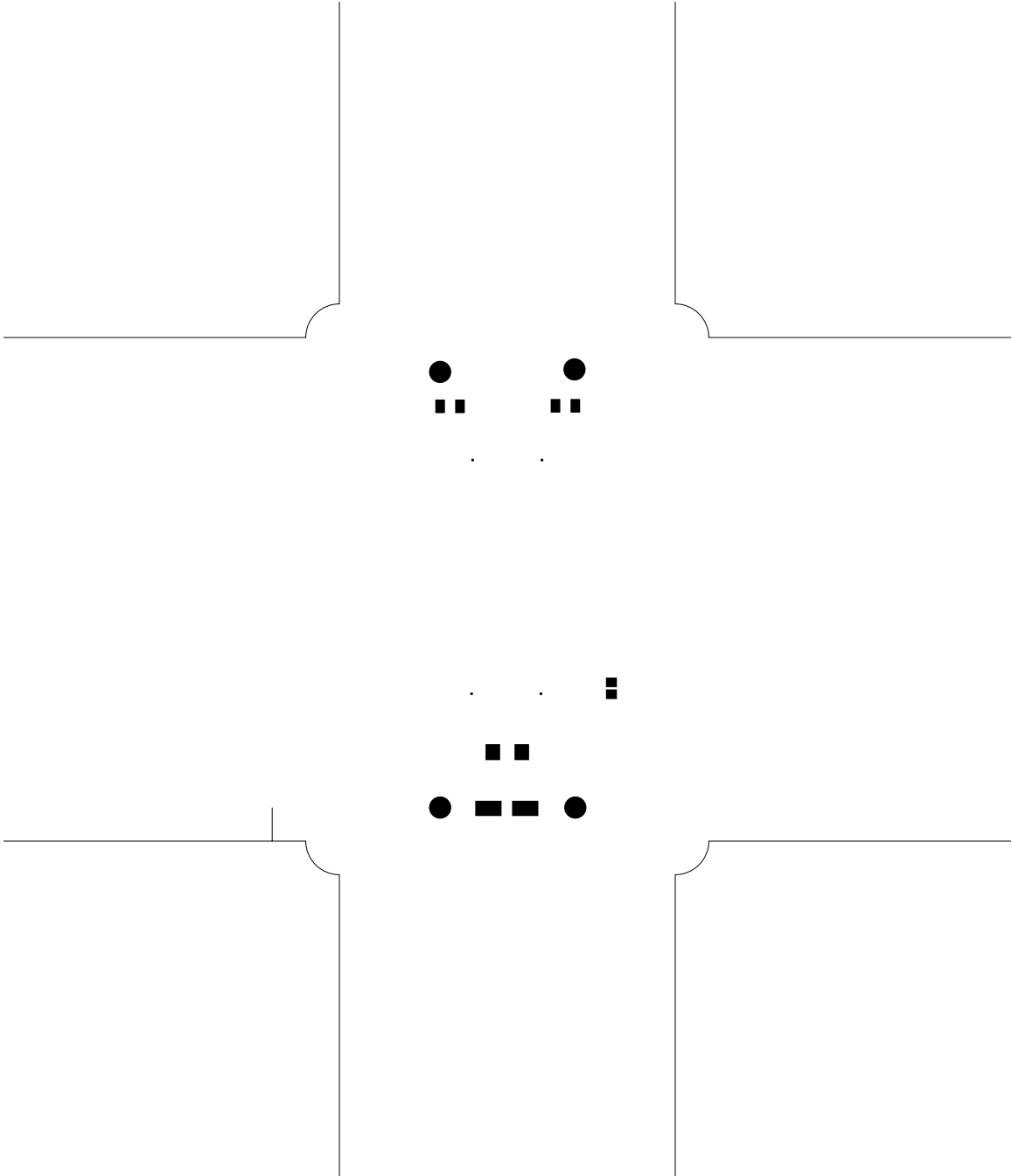
12. bottomassembly

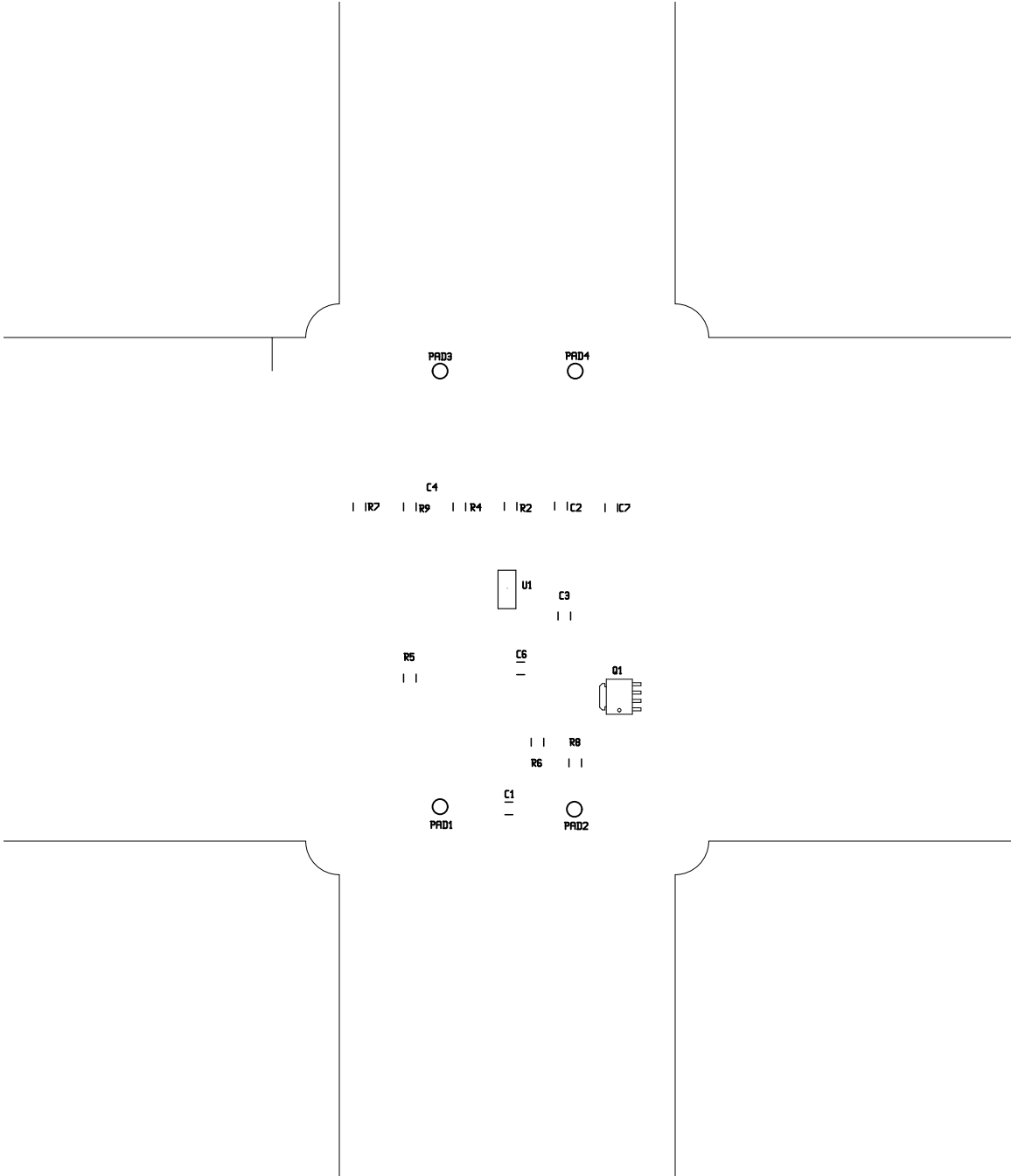
13. fab

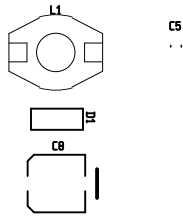
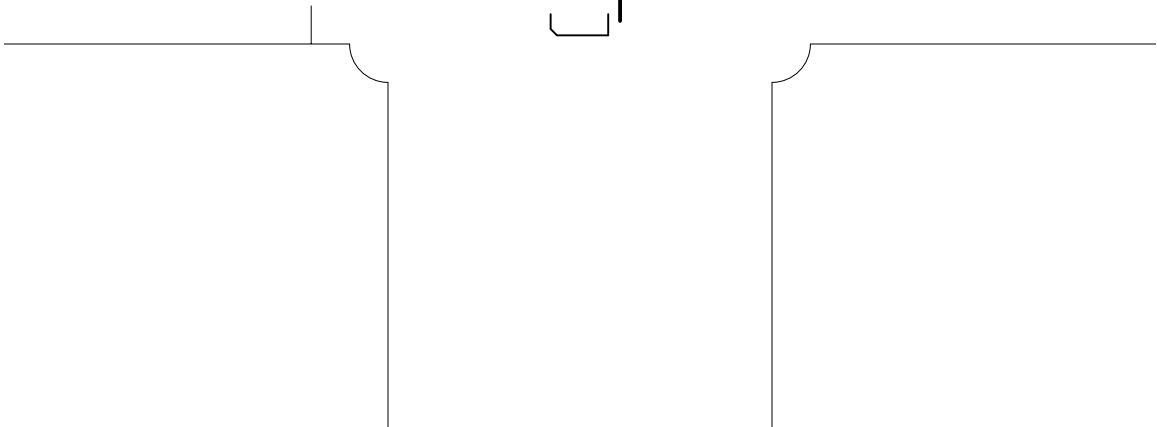
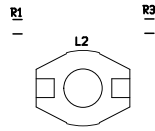
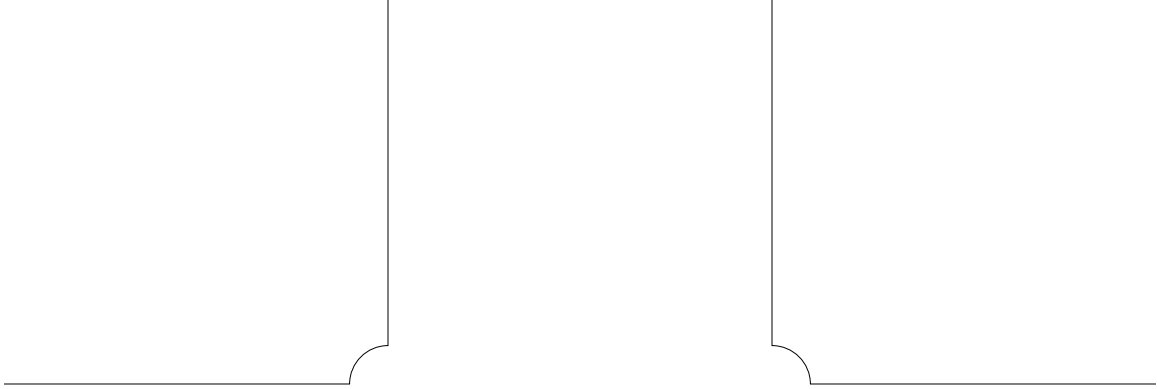


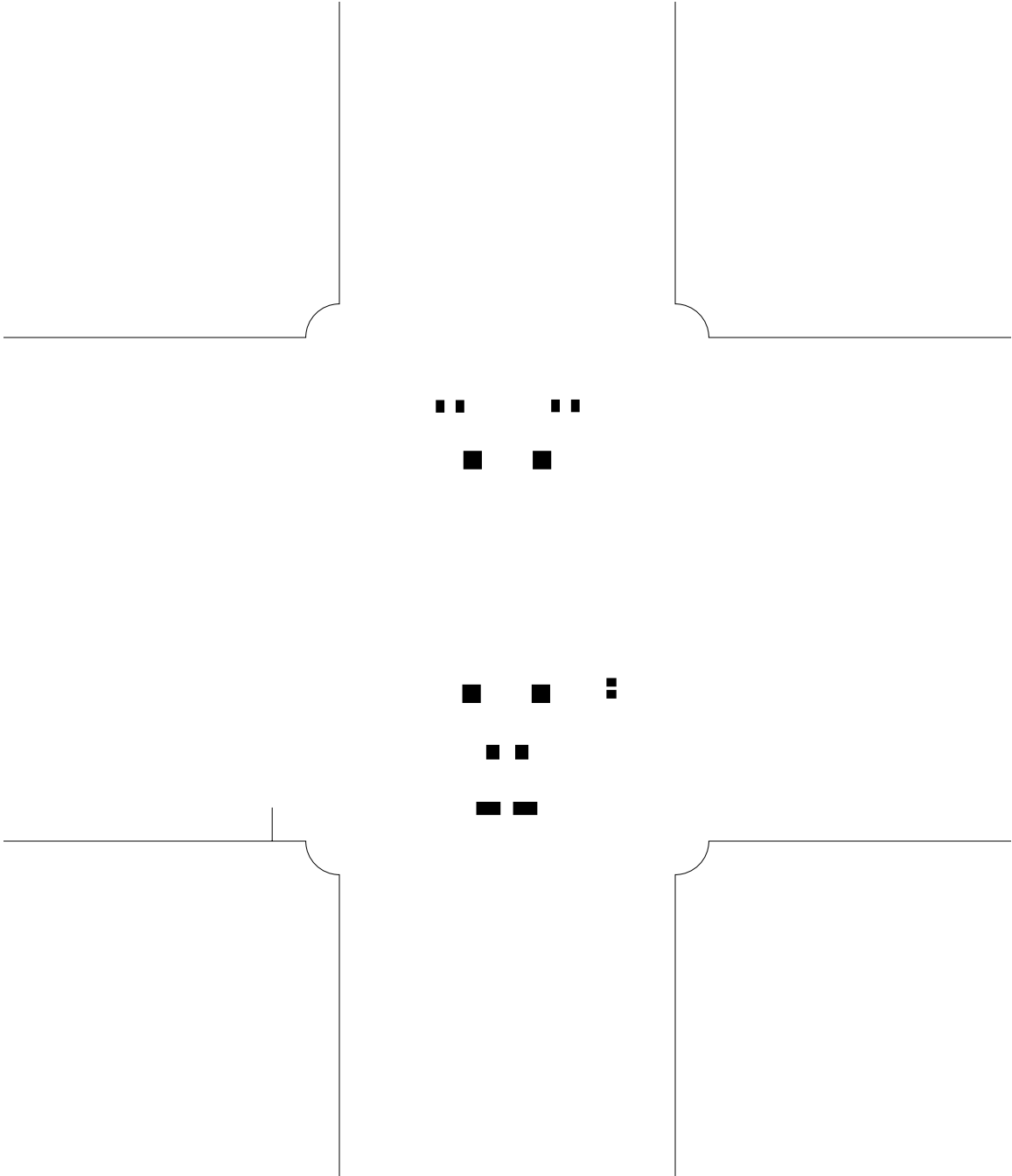


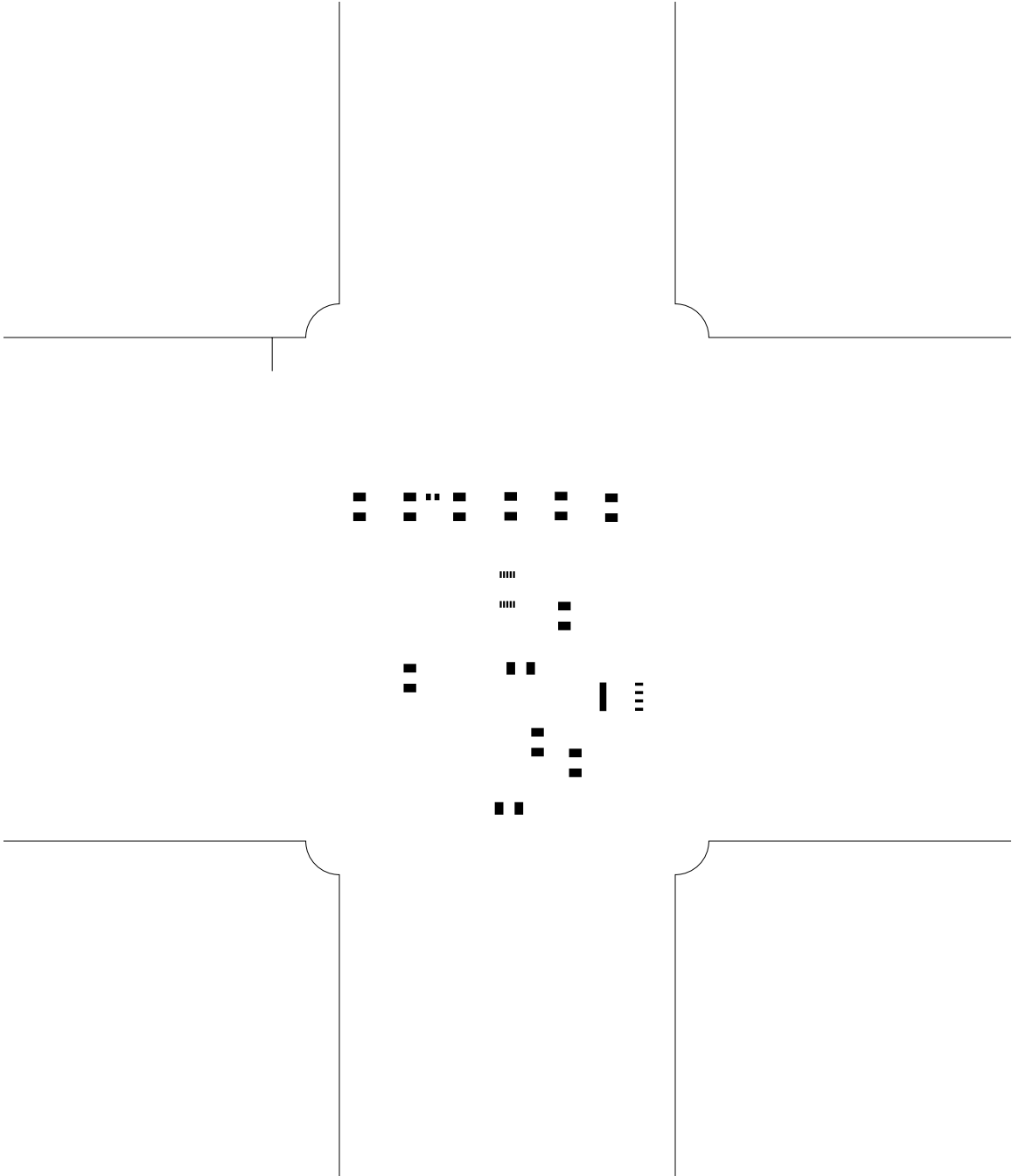


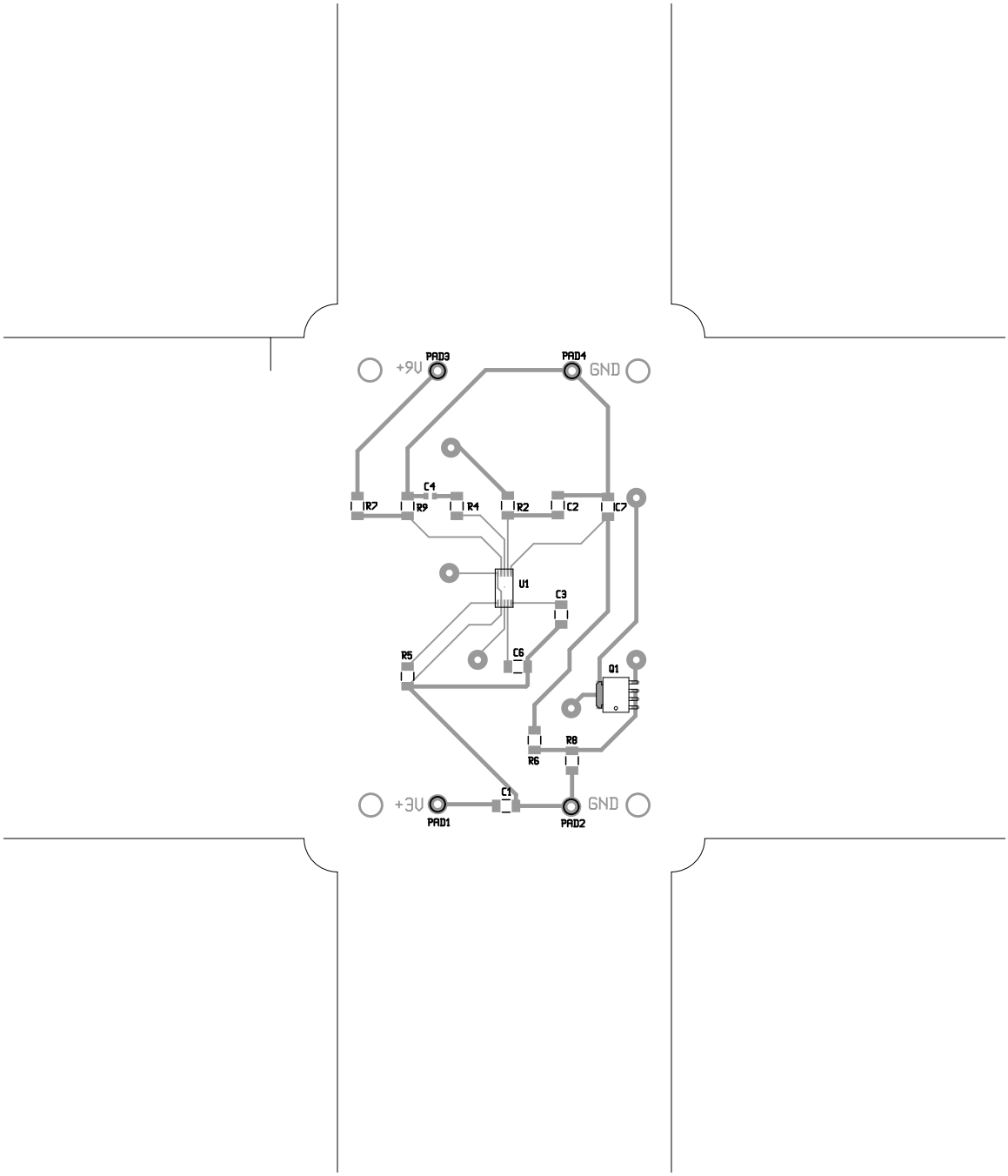


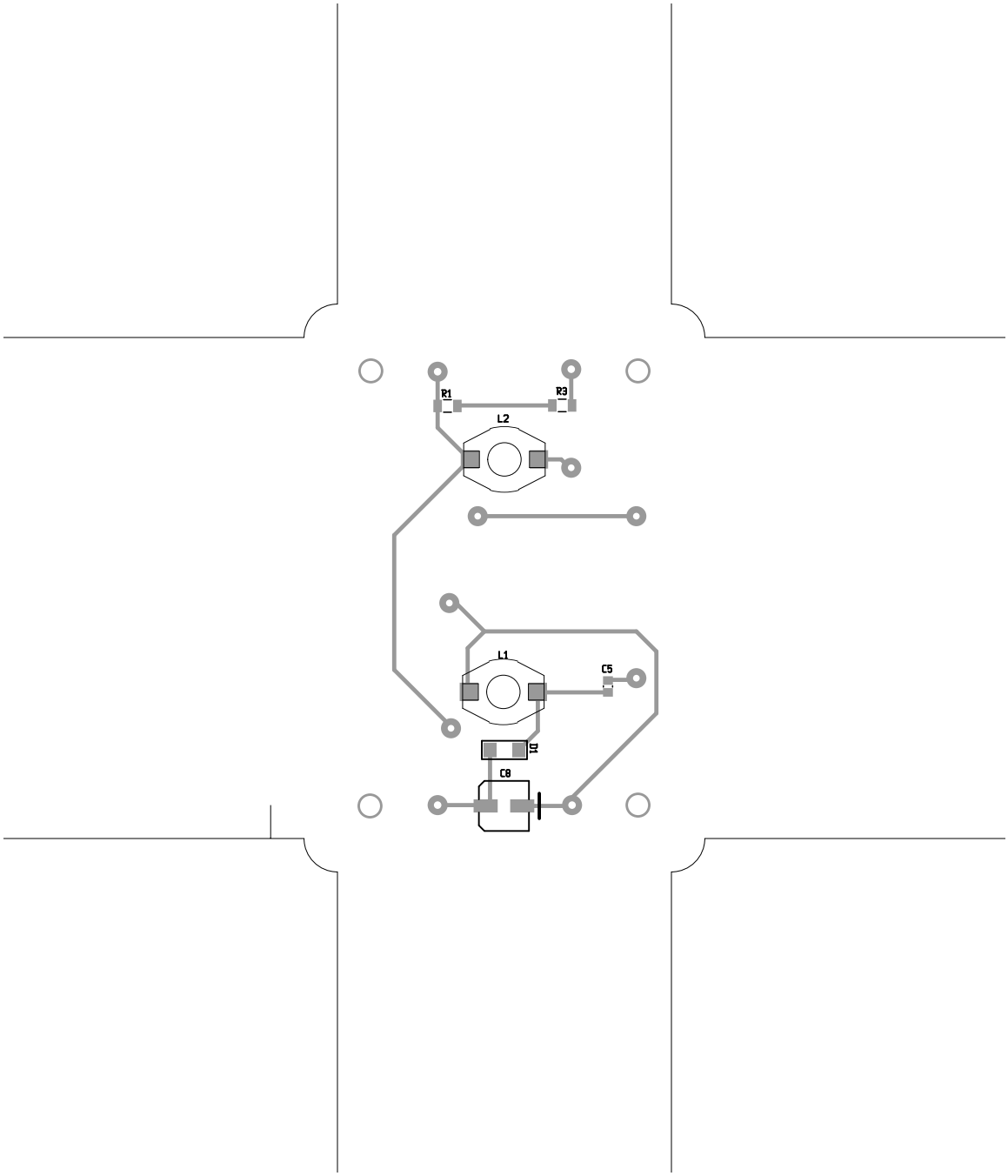












There are 3 different drill sizes used in this layout, 14 holes total

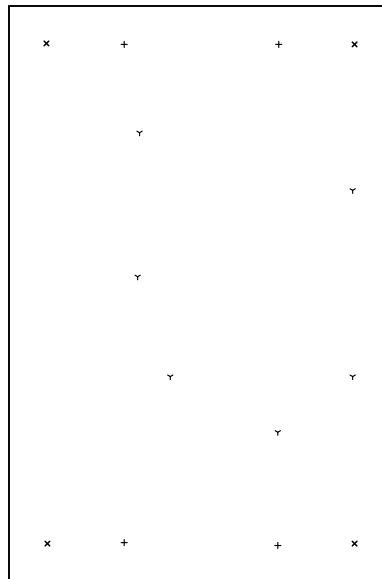
Symbol	Diam. (Inch)	Count	Plated?
γ	<u>0.040</u>	<u>6</u>	<u>YES</u>
+	<u>0.045</u>	<u>4</u>	<u>YES</u>
x	<u>0.120</u>	<u>4</u>	<u>YES</u>

Title: (unknown) - Fabrication Drawing

Author: Rob B.

Date: Mon 17 Jan 2011 06:11:21 PM GMT UTC

Maximum Dimensions: 2000 mils wide, 3000 mils high



Board outline is the centerline of this 10 mil rectangle - 0,0 to 2000,3000 mils